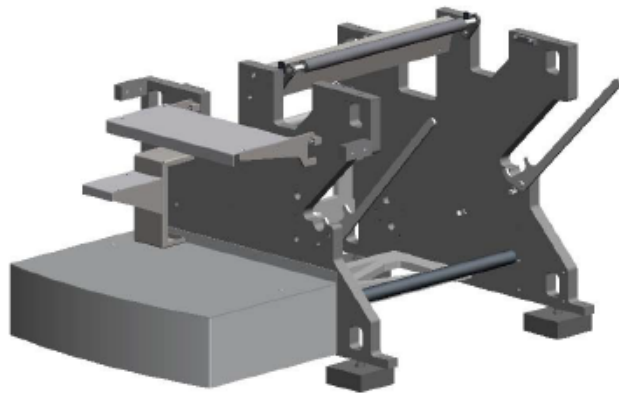


QUAD STACK™ ROLL UNDER BASE FRAME



PARTS CATALOG 2018

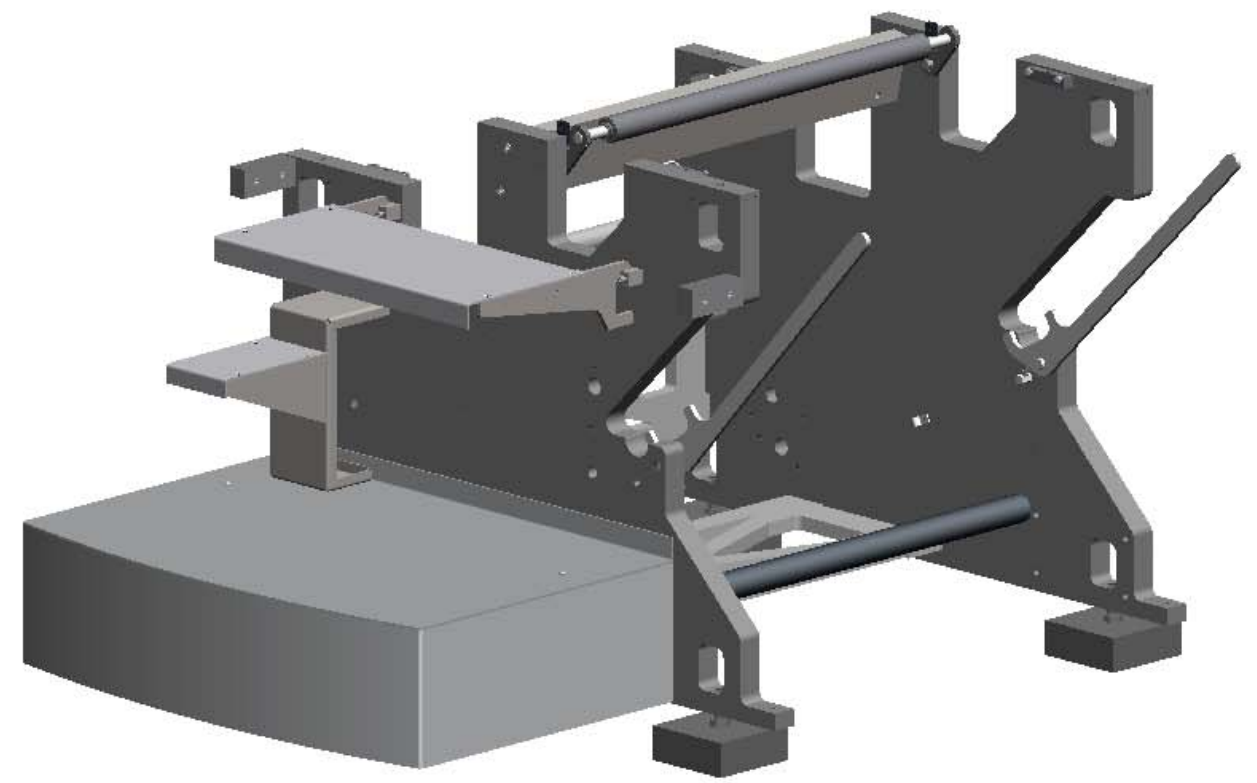
WebPress
Revolutionary™

Web Press LLC

701 East D Street
Tacoma, Washington 98421
Telephone – (253) 620-4747 Fax – (253) 722-0378
www.webpressllc.com

ITEM NO.	PART NUMBER	DESCRIPTION	QTY.	ITEM NO.	PART NUMBER	DESCRIPTION	QTY.
1	024-10-4	1/4" SPRING LOCK WASHER	4		11029080	STIFFENER BAR	1
2	024-10-6	3/8" Ø WASHER, SPRING LOCK, ZINC	18		11029090	MOUNT BAR	1
3	024-10-8	1/2" SPRING LOCK WASHER	4		039-10-5	5/16-18 HEX NUT	2
4	024-10-10	5/8" SPRING LOCK WASHER	4	44	11029930	LEVELING PAD, SELECT W/ 2511410 AS REQ'D.	4
5	024-10-14	7/8" SPRING LOCK WASHER	6	45	11047770	HINGE BLOCK ASSEMBLY	2
6	024-30-8	1/2" HIGH COLLAR LOCK WASHER	4		11047760	HINGE BLOCK	1
7	024-30-14	7/8" HIGH COLLAR LOCK WASHER	4		090188	3/8-16 KEENSERT	8
8	031-10-416	Ø1/4" X 1.0 ROLL PIN	2	46	11050120	TREAD PLATE - INTERMED. STEP: QS-RS	1
9	036-10-412	1/4-20 X 3/4" LG. SHCS	4	47	11050140	INTERMED.STEP - WELDMENT: QS-RS	1
10	036-10-612	3/8-16 UNC X 3/4" LG SHCS	2		11050110	SUPPORT FRAME-INTERMED. STEP: QS-RS	1
11	036-10-636	3/8-16 UNC X 2 1/4" LG SHCS	4		11050130	GUSSET - INTERMED. STEP, QS-RS	2
12	036-10-648	3/8-16 UNC X 3.0" LG SHCS	4	48	11050210	REMOVABLE STEP - ASS'Y: QS-RS	1
13	036-10-840	1/2-13 UNC X 2.5" LG. SHCS	4		11050220	TREAD PLATE - REMOVEABLE STEP: QS-RS	1
14	036-20-1436	7/8-14 UNF X 2.25 LG SHCS	4		11050230	SUPPORT ARM - REMOVEABLE STEP: QS-RS	2
15	036-50-408	1/4-20 UNC X 1/2" LG FHCS	4		036-50-512	5/16-18 UNC X 3/4" LG. FHCS	4
16	037-10-624	3/8-16 UNC X 1.5" LG. HHCS	2	49	11050250	ATTACH BRKT - REMOVEABLE STEP: QS-RS	2
17	037-10-628	3/8-16 UNC X 1.75" LG. HHCS	8	50	11022361	MACHINE O.S. ROLLUNDER	1
18	037-10-820	1/2-13 X 1 1/4 LG HHCS	4	51	11022351	MACHINE O.S. ROLLUNDER	1
19	037-10-1048	5/8-11UNC X 3.0" LG HHCS	4	52	11023850	STIFFENER, HORZ & VERT.	2
20	037-20-1452	7/8-14 UNF X 3.25 LG HHCS	6				
21	037-50-612	3/8-16 UNC X .75 LG BHCS	2				
22	038-10-408	1/4-20 X 1/2" LG. SHSS CUP POINT	2				
23	039-10-6	3/8-16 UNC HEX NUT	2				
24	001054	ER-16X LOW DRAG(WEB GUIDE APPL. ONLY)	2				
25	001068	BEARING, #RALO12NPP, GUIDE ROLLER	4				
26	046731	CONDUIT ACCESSORY, CLAMP, RIDGID 1/2", STEEL, ONE HOLE	1				
27	050202	3/8" NPT PIPE PLUG, SOCKET HEAD	2				
28	511130	STIFFENER, LOWER	1				
29	511260	LEVELING BOLT	4				
30	511490	ROLLER CORE	1				
31	829830	SHAFT	1				
32	11006801	BLOCK, LOWER COVER	4				
33	11022170	BRACKET, LEAD IDLER	2				
34	11022370	STIFFENER, SHIPPING	1				
35	11022501	BRACE, O.S. STEP	2				
	11022451	FLAME-CUT BRACE	1				
36	11022661	ASSEMBLY, ROLLSTANDSTEP WELDMENT	1				
	11022670	PLATE, STEP SKIRT	1				
	11022690	PLATE, STEP ROLLSTAND	1				
37	11022750	SHAFT FOR WEB GUIDE ROLLER	2				
38	11022800	ROLLER, WEB GUIDE	2				
39	11024000	PIN, LIFTING HOOK STOP	2				
40	11024050	LIFTING LUG	2				
41	11024100	ARM, WEB LOADING	2				
	072890	ARM, WEB LOADING	1				
42	11025250	PLATE, TIE BASE/MOD.	2				
43	11029741	SUPPORT, ELECTRICAL BOX	2				
	11029070	SUPPORT TUBE	1				

DATE	SYM	REVISION RECORD	DR	CK
-	-	-	-	-



C:SW-WORKING

WEB PRESS LLC
 PROPRIETARY INFORMATION
 THIS DOCUMENT CONTAINS TRADE SECRETS
 PROTECTED BY THE
 UNIFORM TRADE SECRETS ACT (RCW 19.108).

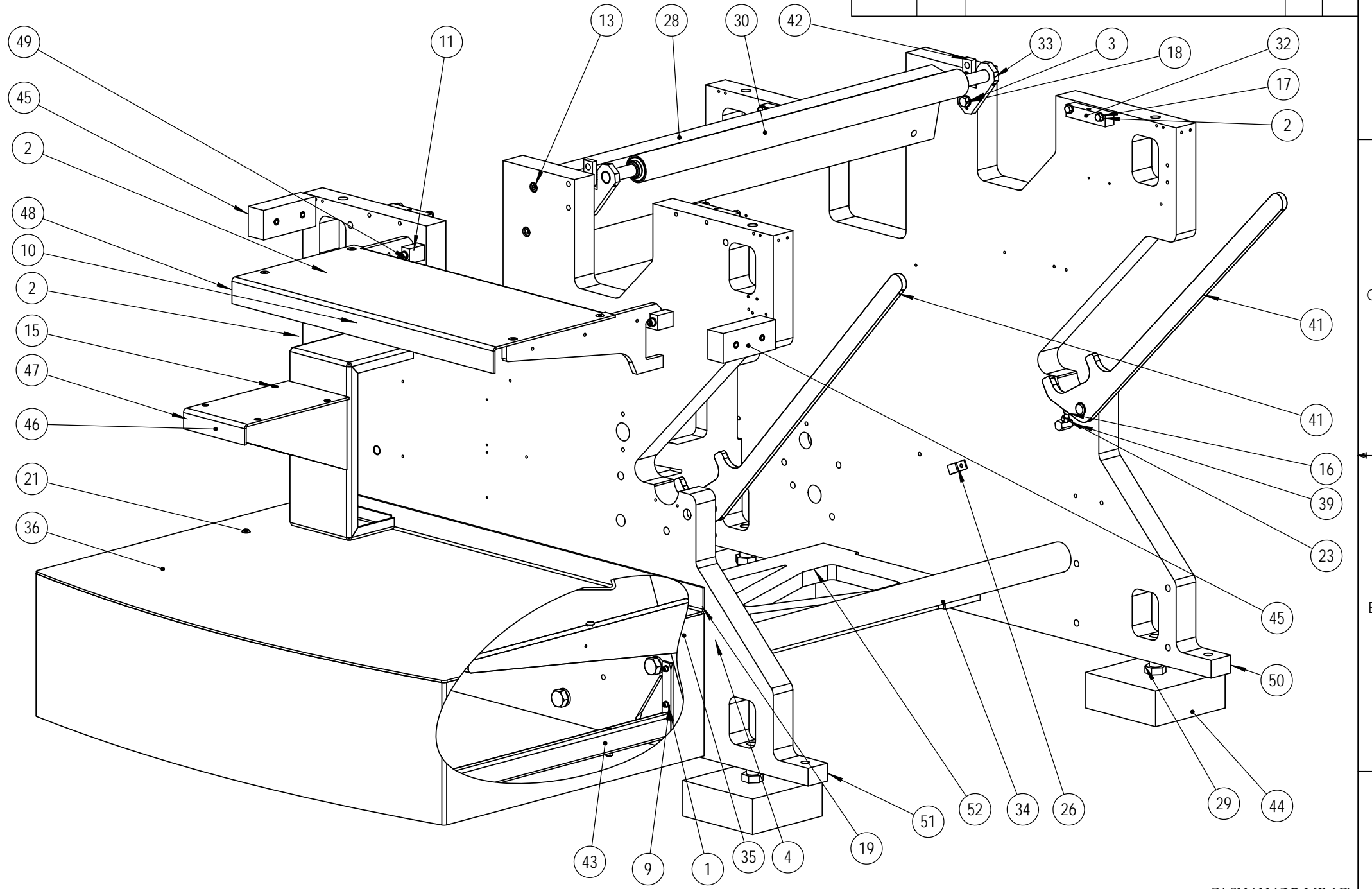
TOLERANCES (EXCEPT AS SHOWN)	
FRACTIONAL	± 1/32
DECIMALS	.XX ± .01 .XXX ± .005
ANGLES	± 1°
DO NOT SCALE DRAWING	

WEB PRESS LLC 701 EAST D STREET TACOMA, WA 98421			
TITLE BASE FRAME ASS'Y ROLL UNDER			
DRAWN GV	SIZE B	DWG. NO. 11022321	
MODELED BY: GV	APPROVALS -	SCALE: 1:16	DATE: -
SHEET 1 OF 2		REV. -	

ITEM NO.	PART NUMBER	DESCRIPTION	Default/QT Y.
1	024-10-4	1/4" SPRING LOCK WASHER	4
2	024-10-6	3/8" Ø WASHER, SPRING LOCK, ZINC	18
3	024-10-8	1/2" SPRING LOCK WASHER	4
4	024-10-10	5/8" SPRING LOCK WASHER	4
5	024-10-14	7/8" SPRING LOCK WASHER	6
6	024-30-8	1/2" HIGH COLLAR LOCK WASHER	4
7	024-30-14	7/8" HIGH COLLAR LOCK WASHER	4
8	031-10-416	Ø1/4" X 1.0 ROLL PIN	2
9	036-10-412	1/4-20 X 3/4" LG. SHCS	4
10	036-10-612	3/8-16 UNC X 3/4" LG SHCS	2
11	036-10-636	3/8-16 UNC X 2 1/4" LG SHCS	4
12	036-10-648	3/8-16 UNC X 3.0" LG SHCS	4
13	036-10-840	1/2-13 UNC X 2.5" LG. SHCS	4
14	036-20-1436	7/8-14 UNF X 2.25 LG SHCS	4
15	036-50-408	1/4-20 UNC X 1/2" LG FHCS	4
16	037-10-624	3/8-16 UNC X 1.5" LG. HHCS	2
17	037-10-628	3/8-16 UNC X 1.75" LG. HHCS	8
18	037-10-820	1/2-13 X 1 1/4 LG HHCS	4
19	037-10-1048	5/8-11UNC X 3.0" LG HHCS	4
20	037-20-1452	7/8-14 UNF X 3.25 LG HHCS	6
21	037-50-612	3/8-16 UNC X .75 LG BHCS	2
22	038-10-408	1/4-20 X 1/2" LG. SHSS CUP POINT	2
23	039-10-6	3/8-16 UNC HEX NUT	2
24	001054	ER-16X LOW DRAG(WEB GUIDE APPL. ONLY)	2
25	001068	BEARING, #RALO12NPP, GUIDE ROLLER	4
26	046731	CONDUIT ACCESSORY, CLAMP, RIDGID 1/2", STEEL, ONE HOLE	1
27	050202	3/8" NPT PIPE PLUG, SOCKET HEAD	2
28	511130	STIFFENER, LOWER	1
29	511260	LEVELING BOLT	4
30	511490	ROLLER CORE	1
31	829830	SHAFT	1
32	11006801	BLOCK, LOWER COVER	4
33	11022170	BRACKET, LEAD IDLER	2
34	11022370	STIFFENER, SHIPPING	1
35	11022501	BRACE, O.S. STEP	2
36	11022661	ASSEMBLY, ROLLSTANDSTEP WELDMENT	1
37	11022750	SHAFT FOR WEB GUIDE ROLLER	2
38	11022800	ROLLER, WEB GUIDE	2
39	11024000	PIN, LIFTING HOOK STOP	2
40	11024050	LIFTING LUG	2
41	11024100	ARM, WEB LOADING	2
42	11025250	PLATE, TIE BASE/MOD.	2
43	11029741	SUPPORT, ELECTRICAL BOX	2
44	11029930	LEVELING PAD, SELECT W/ 2511410 AS REQ'D.	4
45	11047770	HINGE BLOCK ASSEMBLY	2
46	11050120	TREAD PLATE - INTERMED. STEP: QS-RS	1
47	11050140	INTERMED.STEP - WELDMENT: QS-RS	1
48	11050210	REMOVABLE STEP - ASS'Y: QS-RS	1

ITEM NO.	PART NUMBER	DESCRIPTION	Default/QT Y.
49	11050250	ATTACH BRKT - REMOVEABLE STEP: QS-RS	2
50	11022361	MACHINE O.S. ROLLUNDER	1
51	11022351	MACHINE O.S. ROLLUNDER	1
52	11023850	STIFFENER, HORZ & VERT.	2

DATE	SYM	REVISION RECORD	DR	CK

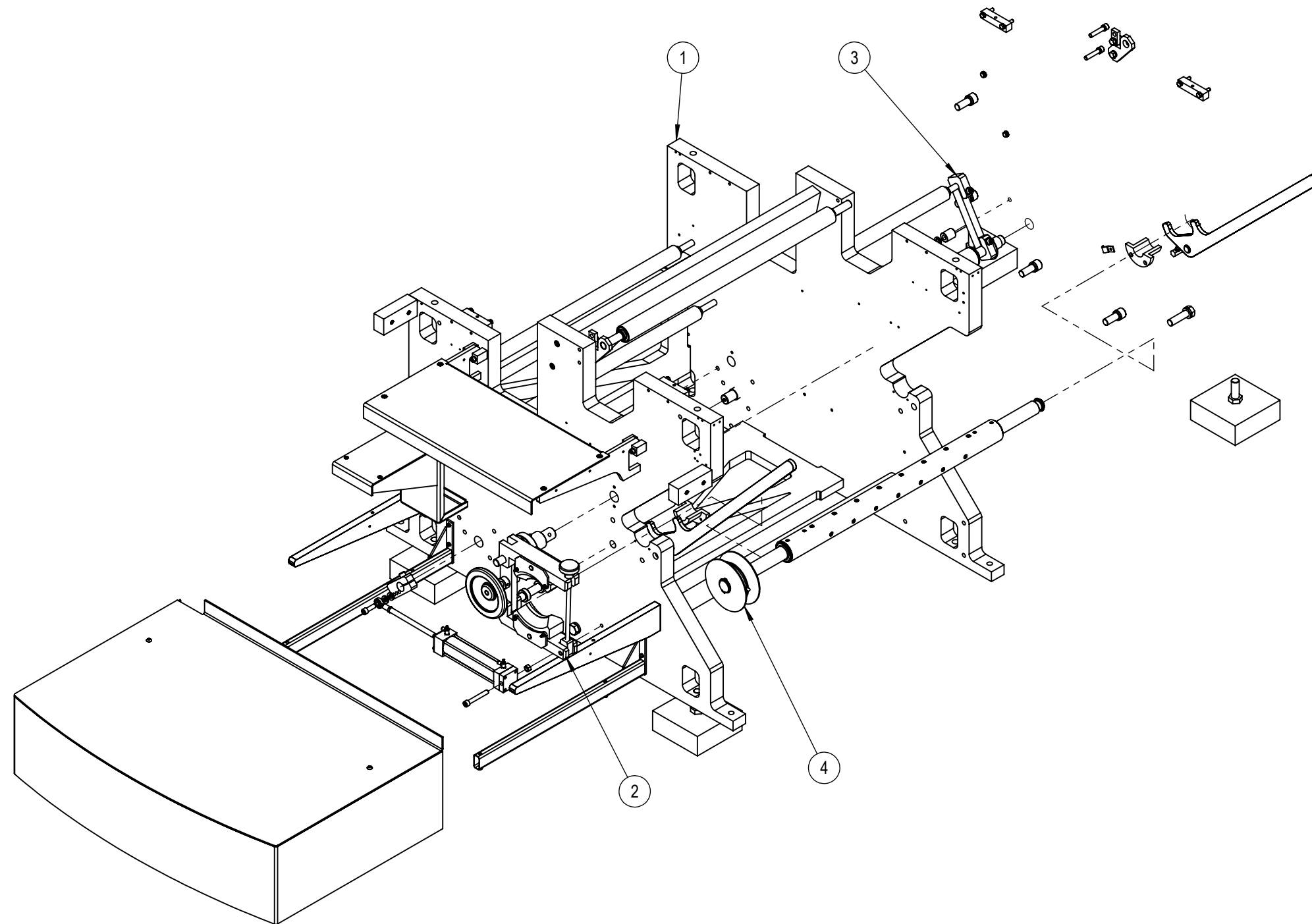


C:\SW-WORKING\A

WEB PRESS LLC 701 EAST D STREET TACOMA, WA 98421		TITLE BASE FRAME ASS'Y ROLL UNDER	
DRAWN GV	SIZE B	DMG. NO. 11022321	SCALE 1:10
MODELED BY: GV	APPROVALS -	DATE: -	SHEET 2 OF 2 REV. -

WEB PRESS LLC PROPRIETARY INFORMATION THIS DOCUMENT CONTAINS TRADE SECRETS PROTECTED BY THE UNIFORM TRADE SECRETS ACT (RCW 19.108).	TOLERANCES (EXCEPT AS SHOWN) FRACTIONAL ± 1/32 DECIMALS .XX ± .01 .XXX ± .005 ANGLES ± 1° DO NOT SCALE DRAWING
---	---

DATE	REV.	DESCRIPTION	DR	CK
9/28/2007	A	NEW RELEASE	GV	BC



ITEM NO.	PART NUMBER	DESCRIPTION	Default/QTY.
1	11022321	BASE FRAME ASSY ROLL UNDER PNUMATIC 4-HIGH	1
2	11022330	BRAKE ASSEMBLY IRU	1
3	11022340	DANCER ASSEMBLY IRU	1
4	11022320	AIR SHAFT ASSY	1

WEB PRESS LLC
 PROPRIETARY INFORMATION
 THIS DOCUMENT CONTAINS TRADE SECRETS
 PROTECTED BY THE
 UNIFORM TRADE SECRETS ACT (RCW 19.108).

TOLERANCES (EXCEPT AS SHOWN)	
FRACTIONAL	± 1/32
DECIMALS	.XX ± .01 .XXX ± .005
ANGLES	± 1°
DO NOT SCALE DRAWING	



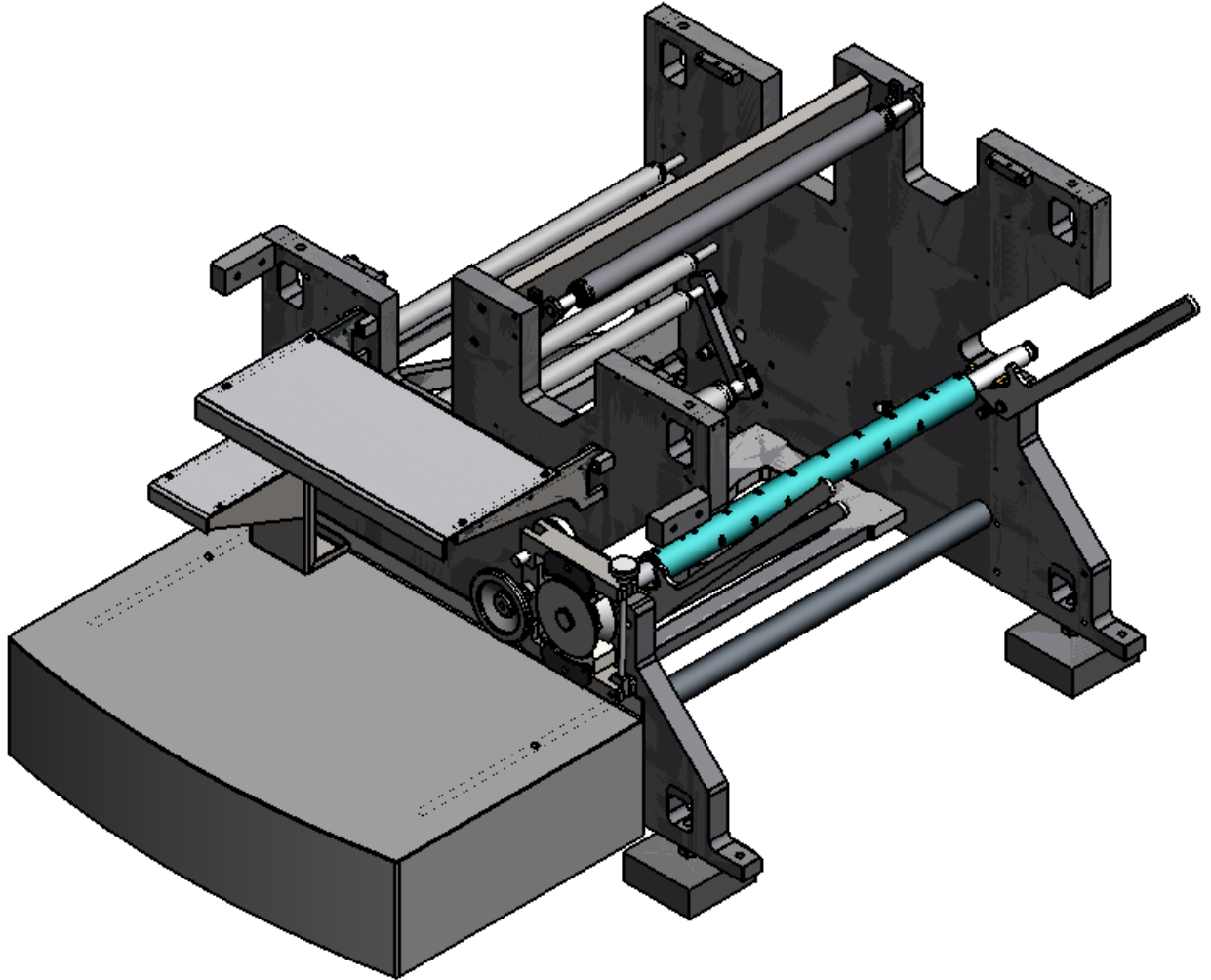
WEB PRESS LLC
 701 EAST D STREET
 TACOMA, WA 98421

TITLE		BASE FRAME IRU			
DRAWN: GV	MODELED BY: GV	APPROVALS BC	SCALE: NTS	DATE: 9/28/07	DWG. NO. 520210001
			SHEET 1 OF 2	REV. A	

ITEM NO.	PART NUMBER	DESCRIPTION	QTY.	ITEM NO.	PART NUMBER	DESCRIPTION	QTY.
1	11022321	BASE FRAME ASS'Y ROLL UNDER PNUMATIC 4-HIGH	1	2	11022330	BRAKE ASSEMBLY IRU	1
	024-10-4	1/4" SPRING LOCK WASHER	4		024-30-6	3/8" HIGH COLLAR LOCK WASHER	2
	024-10-6	3/8" Ø WASHER, SPRING LOCK, ZINC	18		030-51-150	1.50 " EXTERNAL SNAP RING	1
	024-10-8	1/2" SPRING LOCK WASHER	4		036-10-456	1/4-20 X 3.5" LG. SHCS	4
	024-10-10	5/8" SPRING LOCK WASHER	4		036-10-620	3/8-16 UNC X 1.25" LG SHCS	2
	024-10-14	7/8" SPRING LOCK WASHER	6		038-10-808	1/2-13 X 1/2 LG SSS	2
	024-30-8	1/2" HIGH COLLAR LOCK WASHER	4		039-12-4	1/4-20 NYLOC JAM NUT	4
	024-30-14	7/8" HIGH COLLAR LOCK WASHER	4		032002	3/4 x 1 1/4 SET-COLLAR 1H	2
	031-10-416	Ø1/4" X 1.0 ROLL PIN	2		032003	SET COLLAR	2
	036-10-412	1/4-20 X 3/4" LG. SHCS	4		053003	LUBE FITTING 1/4-28, 45 DEG	1
	036-10-612	3/8-16 UNC X 3/4" LG SHCS	2		11023150	SHAFT, BRAKE SHOE PIVOT	2
	036-10-636	3/8-16 UNC X 2 1/4" LG SHCS	4		11023200	PLATE, SHOE	4
	036-10-648	3/8-16 UNC X 3.0" LG SHCS	4		11023500	FLAME CUT, SHOE	1
	036-10-840	1/2-13 UNC X 2.5" LG. SHCS	4		11023250	FRAME, UPPER PIVOT, BRAKE FRA	1
	036-20-1436	7/8-14 UNF X 2.25 LG SHCS	4		11023300	FRAME, LOWER PIVOT, BRAKE FRA	1
	036-50-408	1/4-20 UNC X 1/2" LG FHCS	4		11023350	SCREW ROD, BRAKE CLAMPING	1
	037-10-624	3/8-16 UNC X 1.5" LG. HHCS	2		11023400	KNOB, BRAKE TENSION	1
	037-10-820	1/2-13 X 1 1/4 LG HHCS	4		11023450	ANCHOR, BRAKE CLAMPING	1
	037-10-1048	5/8-11UNC X 3.0" LG HHCS	4		11023550	SCREW, SIDE MOVEMENT OF REEL	1
	037-20-1452	7/8-14 UNF X 3.25 LG HHCS	6		11023600	PLATE, CONNECTING UPPER & LOWER	1
	037-50-612	3/8-16 UNC X .75 LG BHCS	2		11023650	SHAFT, PINOT-LOWER BRAKE FRAME	1
	038-10-408	1/4-20 X 1/2" LG. SHSS CUP POINT	2		11023700	HANDWHEEL, SIDE MOVEMENT OF REEL	1
	039-10-6	3/8-16 UNC HEX NUT	2		033007	7" DIAMETER HANDWHEEL	1
	001054	ER-16X LOW DRAG(WEB GUIDE APPL. ONLY)	2		11023750	PIN, LOWER BRAKE FRAME CLAMP	1
	001068	BEARING, #RALO12NPP, GUIDE ROLLER	4		11023810	SHOE, SEMIMETALIC BRAKE	2
	046731	CONDUIT ACCESSORY, CLAMP, RIDGID 1/2", STEEL, ONE HOLE	1		11024600	SLEEVE, DANCER CAM FRAME	1
	050202	3/8" NPT PIPE PLUG, SOCKET HEAD	2		11024700	SHAFT, BRAKE ECCENTRIC PINOT SHAFT	1
	511130	STIFFENER, LOWER	1		11024750	BUSHING, CAM	1
	511260	LEVELING BOLT	4	3	010021	1 1/2" ID X 1 3/4" OD X 3 1/2" LG. BUSHING	1
	511490	ROLLER CORE	1		11022340	DANCER ASSEMBLY IRU	1
	829830	SHAFT	1		024-10-6	3/8" Ø WASHER, SPRING LOCK, ZINC	3
	11006801	BLOCK, LOWER COVER	4		024-10-8	1/2" SPRING LOCK WASHER	5
	11022170	BRACKET, LEAD IDLER	2		036-10-624	3/8-16 UNC X 1.50" LG SHCS	1
	11022370	STIFFENER, SHIPPING	1		036-10-824	1/2-13 UNC X 1.5" LG. SHCS	2
	11022501	BRACE, O.S. STEP	2		039-10-8	1/2-13 HEX NUT	1
	11022451	FLAME-CUT BRACE	1		080-30-8	1/2" STUD WASHER	2
	11022661	ASSEMBLY, ROLLSTANDSTEP WELDMENT	1		001022	1 1/4" ID X 2.4409 OD (ER-20R)	2
	11022670	PLATE, STEP SKIRT	1		001068	BEARING, #RALO12NPP, GUIDE ROLLER	2
	11022690	PLATE, STEP ROLLSTAND	1		008009	1/2" ID X 1/2-20 UNF FE. (SCP)	1
	11022750	SHAFT FOR WEB GUIDE ROLLER	2		011090	BUSHING, 1.252 ID X 1.503 OD X 1.75 LG w 2" X 3/32" FLANGE	2
	11022800	ROLLER, WEB GUIDE	2		051216	FLOW CONTROL VALVE 1/4 NPT X 1/4 T	2
	11024000	PIN, LIFTING HOOK STOP	2		051223	AIR CYLINDER 6 X 384	1
	11024050	LIFTING LUG	2		090389	RUBBER STOPPER, 1 1/4" OD X 5/8" ID X 1 1/2" LG.	2
	11024100	ARM, WEB LOADING	2		11022800	ROLLER, WEB GUIDE	1
	072890	ARM, WEB LOADING	1		11022950	PIN, CONNECT ROD PIN ON DANCER	1
	11025250	PLATE, TIE BASE/MOD.	2		11023000	AMR, DANCER O.S.	1
	11029741	SUPPORT, ELECTRICAL BOX	2		11023100	PIN, CONNECT ROD PIN ON BRAKE	1
	11029070	SUPPORT TUBE	1		11023050	ROD, BRAKE CONNECTING ROD	1
	11029080	STIFFENER BAR	1		11024350	SHAFT, DANCER ROLL	1
	11029090	MOUNT BAR	1		11024400	SHAFT, DANCER PIVOT SHAFT	1
	039-10-5	5/16-18 HEX NUT	2		11024450	ARM, DANCER - GEAR SIDE	1
	11029930	LEVELING PAD, SELECT W/ 2511410 AS REQ'D.	4		11024500	ROLLER, DANCER TUBE	1
	11047770	HINGE BLOCK ASSEMBLY	2		11024650	CLAMP BRACKET FOR BRAKE ECC.	1
	11047760	HINGE BLOCK	1		11024800	ARM, AIR CYL. CLAMP/CONNECTION	1
	090188	3/8-16 KEENSERT	8		11024900	PLATE, AIR CYL. BASE/MOUNTING	1
	11050120	TREAD PLATE - INTERMED. STEP: QS-RS	1		036-10-828	1/2-13 UNC X 1.75" LG. SHCS	5
	11050140	INTERMED.STEP - WELDMENT: QS-RS	1		024-10-10	5/8" SPRING LOCK WASHER	2
	11050110	SUPPORT FRAME-INTERMED. STEP: QS-RS	1		036-10-1036	5/8-11 X 2 1/4" LG. SHCS	2
	11050130	GUSSET - INTERMED. STEP, QS-RS	2		036-10-648	3/8-16 UNC X 3.0" LG SHCS	2
	11050210	REMOVABLE STEP - ASS'Y: QS-RS	1		053003	LUBE FITTING 1/4-28, 45 DEG	1
	11050220	TREAD PLATE - REMOVEABLE STEP: QS-RS	1		053001	LUBE FITTING 1/4-28, STRAIGHT	1
	11050230	SUPPORT ARM - REMOVEABLE STEP: QS-RS	2				
	036-50-512	5/16-18 UNC X 3/4" LG. FHCS	4				
	11050250	ATTACH BRKT - REMOVEABLE STEP: QS-RS	2				
	037-10-628	3/8-16 UNC X 1.75" LG. HHCS	8				
	11022361	MACHINE O.S. ROLLUNDER	1				
	11022351	MACHINE O.S. ROLLUNDER	1				
	11023850	STIFFENER, HORZ & VERT.	2				

DATE	REV.	DESCRIPTION	DR	CK
9/28/2007	A	NEW RELEASE	GV	BC

ITEM NO.	PART NUMBER	DESCRIPTION	QTY.
4	036-10-856	1/2-13 UNC X 3.5" LG. SHCS	1
	11022320	AIR SHAFT ASSY	1
	11025110	BUSHING	2
	11025060	PULLEY BRAKE "V"	1
	090448	AIR SHAFT QS/RS	1
	030-51-175	1 3/4" Ø EXT. SNAP RING	2



WEB PRESS LLC
701 EAST D STREET
TACOMA WA 98421

TITLE
BASE FRAME IRU

DRAWN: **GV** SIZE: **B** DWG. NO.: **520210001**

MODELED BY: **GV** APPROVALS: **BC** SCALE: **NTS** DATE: **9/28/07** SHEET **2** OF **2** REV. **A**

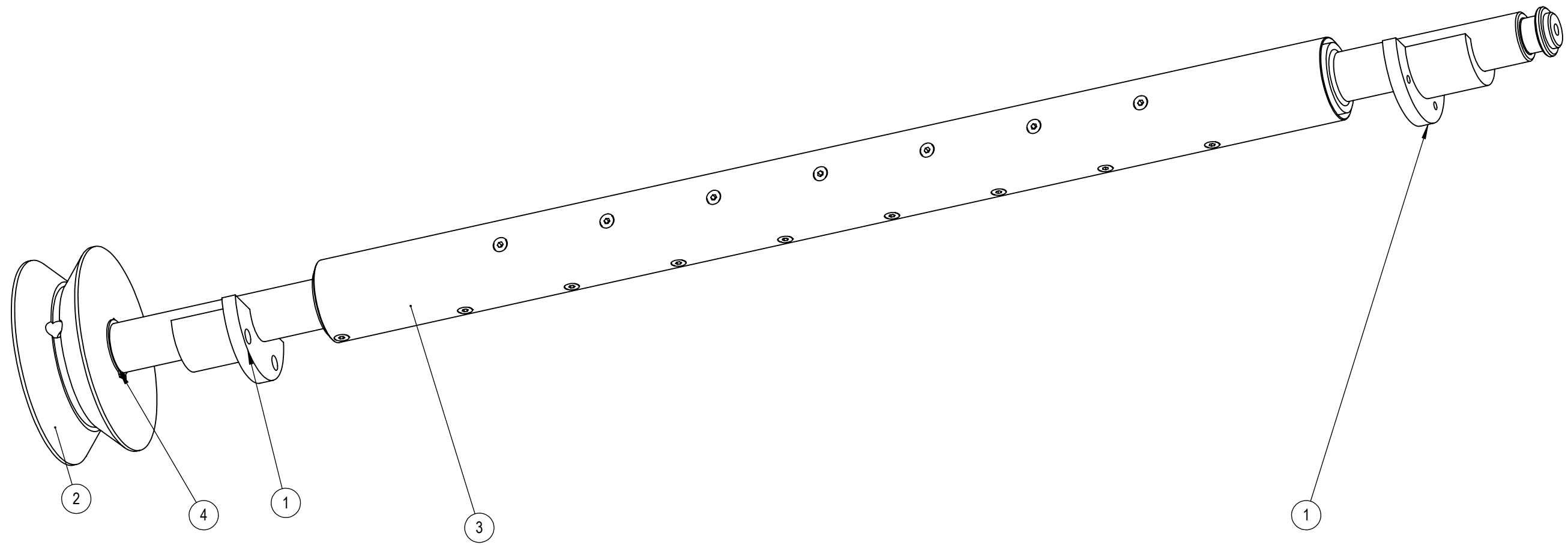
WEB PRESS LLC
PROPRIETARY INFORMATION

THIS DOCUMENT CONTAINS TRADE SECRETS
PROTECTED BY THE
UNIFORM TRADE SECRETS ACT (RCW 19.108).

TOLERANCES (EXCEPT AS SHOWN)	
FRACTIONAL	± 1/32
DECIMALS	.XX ± .01 .XXX ± .005
ANGLES	± 1°
DO NOT SCALE DRAWING	

ITEM NO.	PART NUMBER	DESCRIPTION	Default/QT Y.
1	11025110	BUSHING	2
2	11025060	PULLEY BRAKE "V"	1
3	090448	AIR SHAFT QS/RS	1
4	030-51-175	1 3/4" Ø EXT. SNAP RING	2

DATE	SYM	REVISION RECORD	DR	CK
10-24-07	A	NEW RELEASE	ZB	



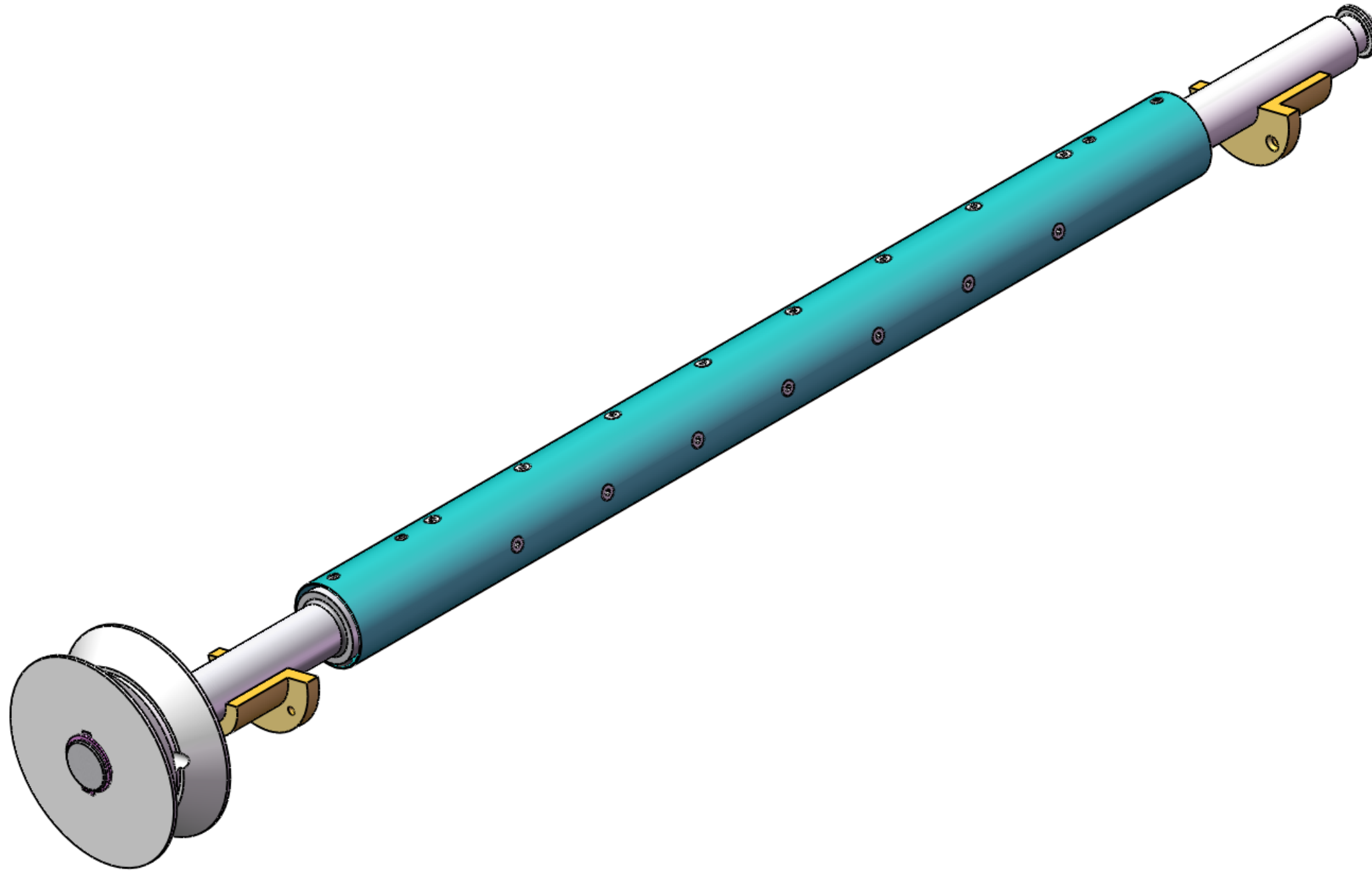
C:\SW-WORKING\A

WEB PRESS LLC
 PROPRIETARY INFORMATION
 THIS DOCUMENT CONTAINS TRADE SECRETS
 PROTECTED BY THE
 UNIFORM TRADE SECRETS ACT (RCW 19.108).

TOLERANCES (EXCEPT AS SHOWN)	
FRACTIONAL	± 1/32
DECIMALS	.XX ± .01 .XXX ± .005
ANGLES	± 1°
DO NOT SCALE DRAWING	

WEB PRESS LLC 701 EAST D STREET TACOMA, WA 98421			
TITLE AIR SHAFT ASSY			
DRAWN: ZB	SIZE B	DWG. NO. 11022320	
MODELED BY: ZB	APPROVALS	SCALE: 1:12	DATE: 10-23-07
		SHEET 1 OF 2	REV. A

DATE	SYM	REVISION RECORD	DR	CK
10-24-07	A	NEW RELEASE	ZB	



C:\SW-WORKING\A

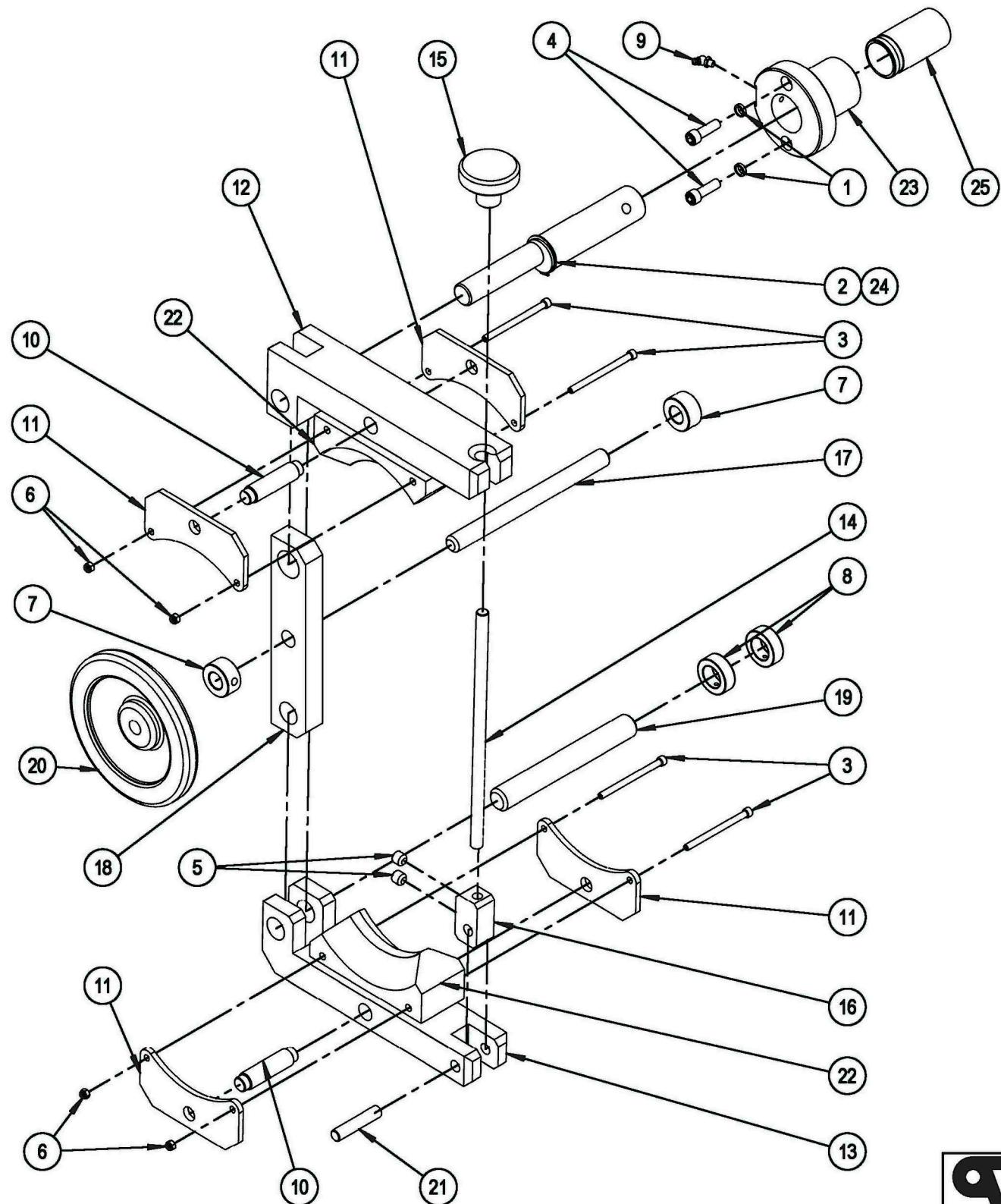
WEB PRESS CORPORATION
 22023 68th AVENUE SOUTH
 KENT, WASHINGTON 98032

WEB PRESS CORPORATION
 PROPRIETARY INFORMATION
 THIS DOCUMENT CONTAINS TRADE SECRETS
 PROTECTED BY THE
 UNIFORM TRADE SECRETS ACT (RCW 19.108).

TOLERANCES (EXCEPT AS SHOWN)	
FRACTIONAL	± 1/32
DECIMALS	.XX ± .01 .XXX ± .005
ANGLES	± 1°
DO NOT SCALE DRAWING	

TITLE AIR SHAFT ASSY		SIZE B	DWG. NO. 11022320D
DRAWN: ZB	APPROVALS	SCALE: 1:12	DATE: 10-23-07
MODELED BY: ZB		SHEET 2 OF 2	REV. A

ITEM NO.	PART NUMBER	DESCRIPTION	QTY.
1	024-30-6	3/8" HIGH COLLAR LOCK WASHER	2
2	030-51-150	1.50 " EXTERNAL SNAP RING	1
3	036-10-456	1/4-20 X 3.5" LG. SHCS	4
4	036-10-620	3/8-16 UNC X 1.25" LG SHCS	2
5	038-10-808	1/2-13 X 1/2 LG SSS	2
6	039-12-4	1/4-20 NYLOC JAM NUT	4
7	032002	3/4 x 1 1/4 SET-COLLAR 1H	2
8	032003	SET COLLAR	2
9	053003	LUBE FITTING 1/4-28, 45 DEG	1
10	11023150	SHAFT, BRAKE SHOE PIVOT	2
11	11023200	PLATE, SHOE	4
12	11023250	FRAME, UPPER PIVOT, BRAKE FRA	1
13	11023300	FRAME, LOWER PIVOT, BRAKE FRA	1
14	11023350	SCREW ROD, BRAKE CLAMPING	1
15	11023400	KNOB, BRAKE TENSION	1
16	11023450	ANCHOR, BRAKE CLAMPING	1
17	11023550	SCREW, SIDE MOVEMENT OF REEL	1
18	11023600	PLATE, CONNECTING UPPER & LOWER	1
19	11023650	SHAFT, PINOT-LOWER BRAKE FRAME	1
20	11023700	HANDWHEEL, SIDE MOVEMENT OF REEL	1
21	11023750	PIN, LOWER BRAKE FRAME CLAMP	1
22	11023810	SHOE, SEMIMETALIC BRAKE	2
23	11024600	SLEEVE, DANCER CAM FRAME	1
24	11024700	SHAFT, BRAKE ECCENTRIC PINOT SHAFT	1
25	11024750	BUSHING, CAM	1



DATE	SYM	REVISION RECORD	DR	CK
10/5/07	A	NEW RELEASE	GV	

WAZBIG-NQS-7-3-12A

WEB PRESS LLC
PROPRIETARY INFORMATION
 THIS DOCUMENT CONTAINS TRADE SECRETS
 PROTECTED BY THE
 UNIFORM TRADE SECRETS ACT (RCW 19.108).

TOLERANCES (EXCEPT AS SHOWN)	
FRACTIONAL	± 1/32
DECIMALS	.XX ± .01 .XXX ± .005
ANGLES	± 1°
DO NOT SCALE DRAWING	

WEB PRESS LLC
 701 EAST "D" STREET
 TACOMA, WASHINGTON 98421

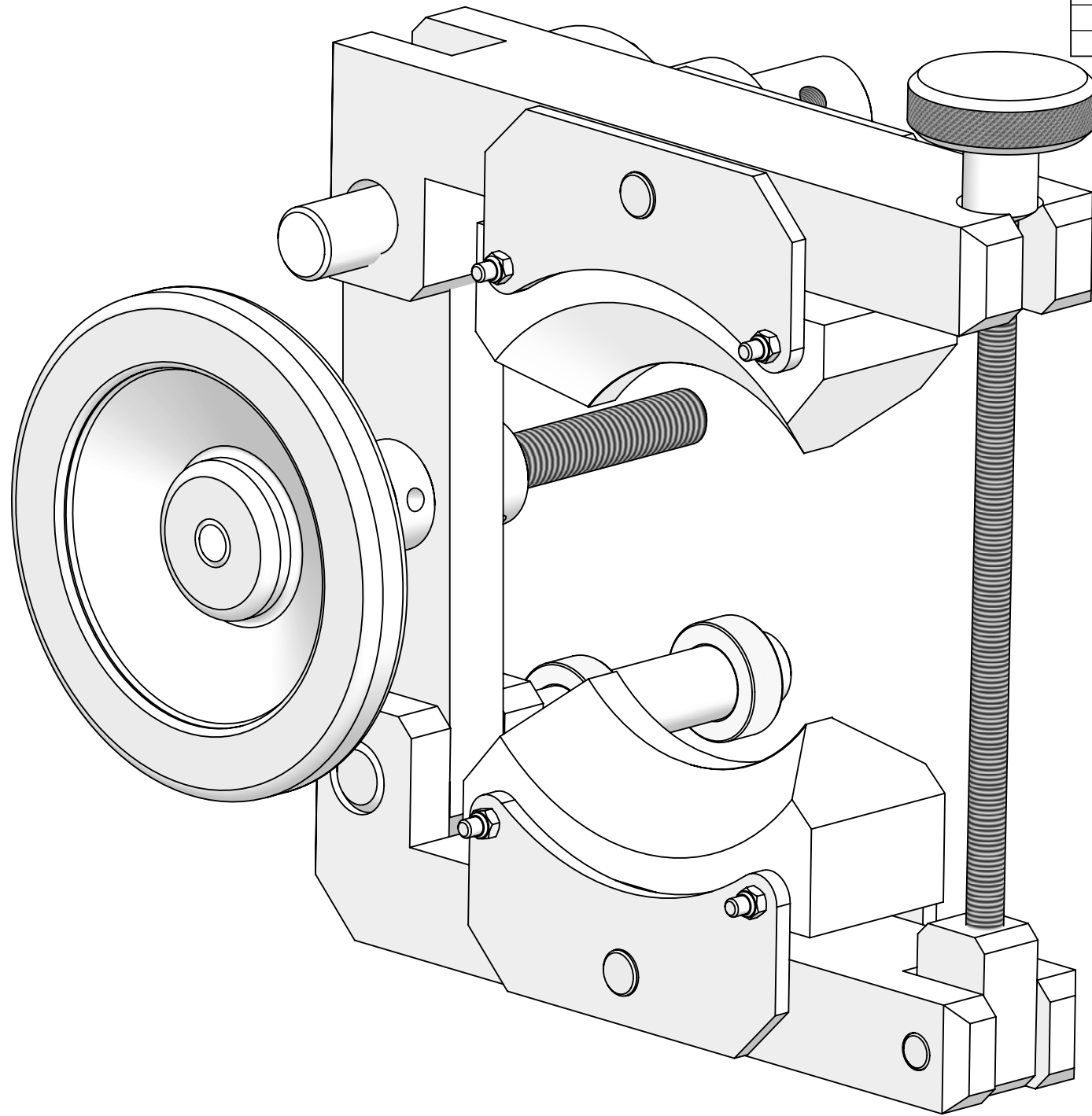
TITLE BRAKE ASSEMBLY IRU

DRAWN: **G VARGAS** SIZE: **B** DWG. NO.: **11022330**

MODELED BY: **GV** APPROVALS: _____

SCALE: 1:6 DATE: 10/5/07 SHEET 1 OF 2 REV. A

DATE	SYM	REVISION RECORD	DR	CK
10/5/07	A	NEW RELEASE	GV	




ITEM NO.	PART NUMBER	DESCRIPTION	QTY.
1	024-30-6	3/8" HIGH COLLAR LOCK WASHER	2
2	030-51-150	1.50 " EXTERNAL SNAP RING	1
3	036-10-456	1/4-20 X 3.5" LG. SHCS	4
4	036-10-620	3/8-16 UNC X 1.25" LG SHCS	2
5	038-10-808	1/2-13 X 1/2 LG SSS	2
6	039-12-4	1/4-20 NYLOC JAM NUT	4
7	032002	3/4 x 1 1/4 SET-COLLAR 1H	2
8	032003	SET COLLAR	2
9	053003	LUBE FITTING 1/4-28, 45 DEG	1
10	11023150	SHAFT, BRAKE SHOE PIVOT	2
11	11023200	PLATE, SHOE	4
	11023500	FLAME CUT, SHOE	1
12	11023250	FRAME, UPPER PIVOT, BRAKE FRA	1
13	11023300	FRAME, LOWER PIVOT, BRAKE FRA	1
14	11023350	SCREW ROD, BRAKE CLAMPING	1
15	11023400	KNOB, BRAKE TENSION	1
16	11023450	ANCHOR, BRAKE CLAMPING	1
17	11023550	SCREW, SIDE MOVEMENT OF REEL	1
18	11023600	PLATE, CONNECTING UPPER & LOWER	1
19	11023650	SHAFT, PINOT-LOWER BRAKE FRAME	1
20	11023700	HANDWHEEL, SIDE MOVEMENT OF REEL	1
	033007	7" DIAMETER HANDWHEEL	1
21	11023750	PIN, LOWER BRAKE FRAME CLAMP	1
22	11023810	SHOE, SEMIMETALIC BRAKE	2
23	11024600	SLEEVE, DANCER CAM FRAME	1
24	11024700	SHAFT, BRAKE ECCENTRIC PINOT SHAFT	1
25	11024750	BUSHING, CAM	1
	010021	1 1/2" ID X 1 3/4" OD X 3 1/2" LG. BUSHING	1

W:ZBIG-NQS-7-3-12\A

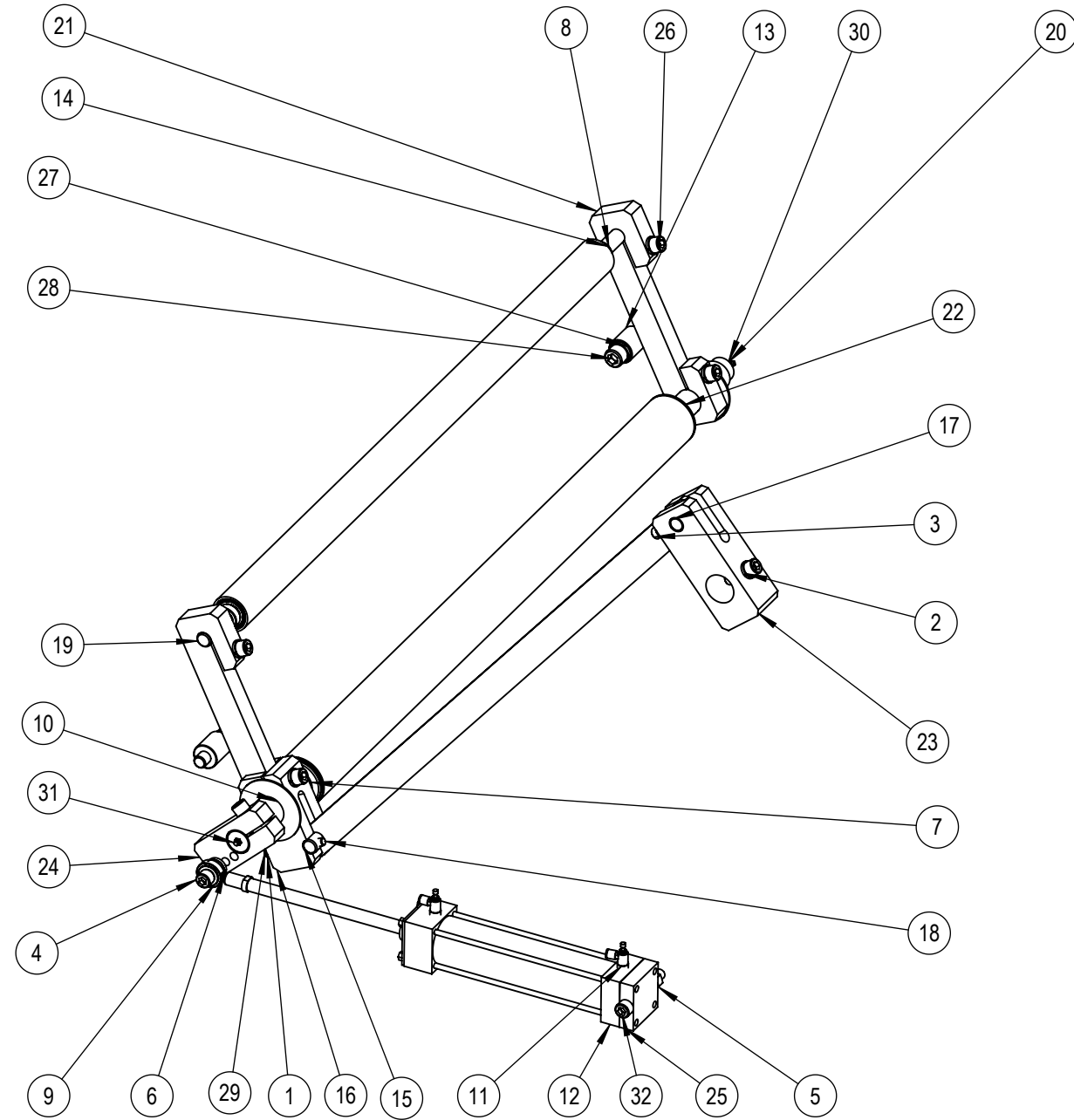
WEB PRESS CORPORATION
 PROPRIETARY INFORMATION
 THIS DOCUMENT CONTAINS TRADE SECRETS
 PROTECTED BY THE
 UNIFORM TRADE SECRETS ACT (RCW 19.108).

TOLERANCES (EXCEPT AS SHOWN)	
FRACTIONAL	± 1/32
DECIMALS	.XX ± .01 .XXX ± .005
ANGLES	± 1°
DO NOT SCALE DRAWING	

 WEB PRESS LLC 701 EAST "D" STREET TACOMA, WASHINGTON 98421		TITLE	
		BRAKE ASSEMBLY IRU	
DRAWN: G VARGAS		SIZE: B	DWG. NO.: 11022330
MODELED BY: GV		APPROVALS:	SCALE: 1:3
		DATE: 10/5/07	SHEET 2 OF 2 REV. A

DATE	SYM	REVISION RECORD	DR	CK
	A	NEW RELEASE		


ITEM NO.	PART NUMBER	DESCRIPTION	Default/QTY.
1	024-10-6	3/8" SPRING LOCK WASHER	3
2	024-10-8	1/2" SPRING LOCK WASHER	5
3	036-10-624	3/8-16 UNC X 1.50" LG SHCS	1
4	036-10-824	1/2-13 UNC X 1.5" LG. SHCS	2
5	039-10-8	1/2-13 HEX NUT	1
6	080-30-8	1/2" STUD WASHER	2
7	001022	1 1/4" ID X 2.4409 OD (ER-20R)	2
8	001068	bearing, #RALO12NPP, GUIDE ROLLER	2
9	008009	1/2" ID X 1/2-20 UNF FE. (SCP)	1
10	011090	BUSHING, 1.252 ID X 1.503 OD X 1.75 LG w 2" X 3/32" FLANGE	2
11	051216	FLOW CONTROL VALVE 1/4 NPT X 1/4 T	2
12	051223	AIR CYLINDER 6 X 384	1
13	090389	RUBBER STOPPER, 1 1/4" OD X 5/8" ID X 1 1/2" LG.	2
14	11022800	ROLLER, WEB GUIDE	1
15	11022950	PIN, CONNECT ROD PIN ON DANCER	1
16	11023000	AMR, DANCER O.S.	1
17	11023100	PIN, CONNECT ROD PIN ON BRAKE	1
18	11023050	ROD, BRAKE CONNECTING ROD	1
19	11024350	SHAFT, DANCER ROLL	1
20	11024400	SHAFT, DANCER PIVOT SHAFT	1
21	11024450	ARM, DANCER - GEAR SIDE	1
22	11024500	ROLLER, DANCER TUBE	1
23	11024650	CLAMP BRACKET FOR BRAKE ECC.	1
24	11024800	ARM, AIR CYL. CLAMP/CONNECTION	1
25	11024900	PLATE, AIR CYL. BASE/MOUNTING	1
26	036-10-828	1/2-13 UNC X 1.75" LG. SHCS	5
27	024-10-10	5/8" SPRING LOCK WASHER	2
28	036-10-1036	5/8-11 X 2 1/4" LG. SHCS	2
29	036-10-648	3/8-16 UNC X 3.0" LG SHCS	2
30	053003	LUBE FITTING 1/4-28, 45 DEG	1
31	053001	LUBE FITTING 1/4-28, STRAIGHT	1
32	036-10-856	1/2-13 UNC X 3.5" LG. SHCS	1



W:ZBIG-NQS-7-3-12\A

WEB PRESS CORPORATION
 PROPRIETARY INFORMATION
 THIS DOCUMENT CONTAINS TRADE SECRETS
 PROTECTED BY THE
 UNIFORM TRADE SECRETS ACT (RCW 19.108).

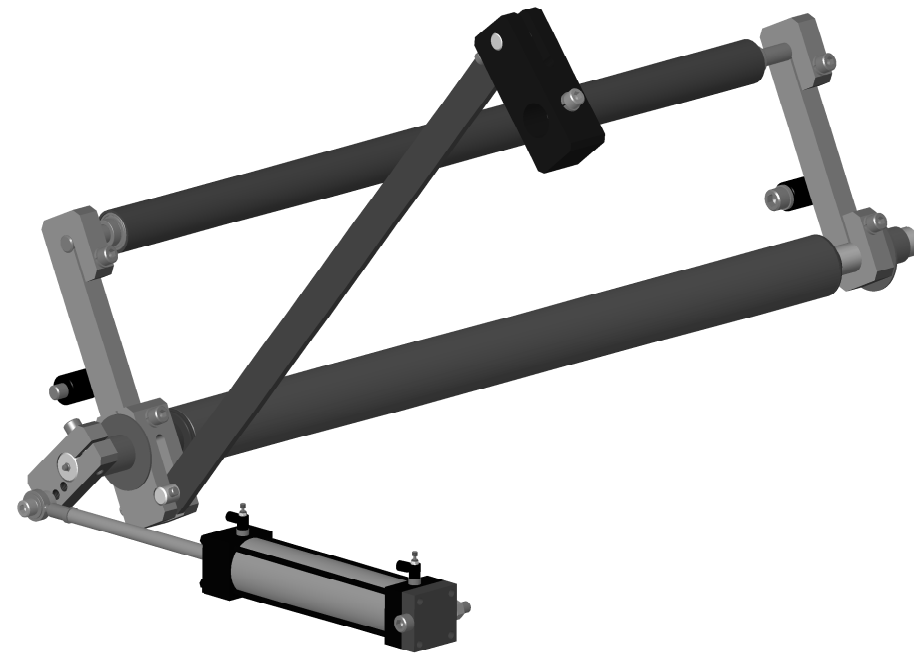
TOLERANCES (EXCEPT AS SHOWN)	
FRACTIONAL	± 1/32
DECIMALS	.XX ± .01 .XXX ± .005
ANGLES	± 1°
DO NOT SCALE DRAWING	



WEB PRESS LLC
 701 EAST "D" STREET
 TACOMA, WASHINGTON 98421

TITLE DANCER ASSEMBLY IRU		SIZE B	DWG. NO. 11022340
DRAWN: GV	MODELED BY: GV	APPROVALS	SCALE: 1:8
DATE:		SHEET 1 OF 2	REV. A


DATE	SYM	REVISION RECORD	DR	CK
	A	NEW RELEASE		



W:\ZBIG-NQS-7-3-12\A

WEB PRESS CORPORATION
 PROPRIETARY INFORMATION
 THIS DOCUMENT CONTAINS TRADE SECRETS
 PROTECTED BY THE
 UNIFORM TRADE SECRETS ACT (RCW 19.108).

TOLERANCES (EXCEPT AS SHOWN)	
FRACTIONAL	± 1/32
DECIMALS	.XX ± .01 .XXX ± .005
ANGLES	± 1°
DO NOT SCALE DRAWING	

 WEB PRESS LLC 701 EAST "D" STREET TACOMA, WASHINGTON 98421		TITLE	
		DANCER ASSEMBLY IRU	
DRAWN: GV		SIZE	DWG. NO.
MODELED BY: GV		B	11022340
APPROVALS		SCALE: 1:8	DATE:
		SHEET 2 OF 2	REV. A